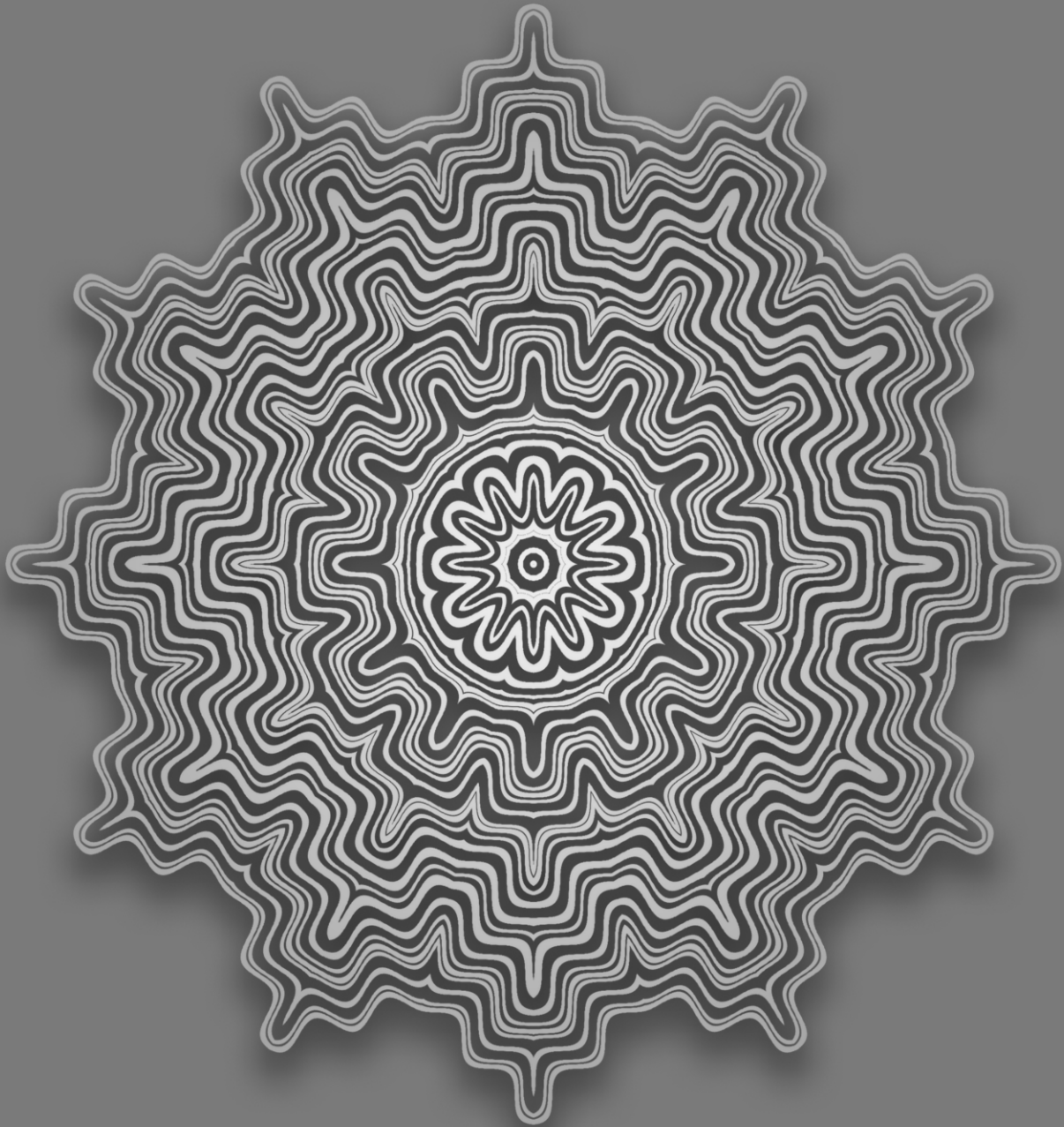


SUPERBOND®

FUNCTION • QUALITY • DESIGN



PLATINUM EDITION

QUALITY DESIGN

A Step Up in Design & Durability

SUPER BOND offers inspiration on a grand scale. With a brand new collection of Metallic, Solid, Sand, Corrosive Metal, Fire Resistant, Glossy, Stone, Marble, Mirror, Sparkle, Skin and Wood panels **SUPER BOND** assures that the toughness of its product stay uncompromised.

National Reach & Unrivalled Service

The high-tech plant at Palghar, Maharashtra has a natural edge over the competition by being closest and fastest to market. Hundreds of satisfied customers validate the distinguishable experience of choosing

SUPER BOND - unmatched services!



BUSINESS EXPERTISE

After years of hard work and persistence, **SUPER BOND** has established itself as a trustworthy and a sound player in the industry. The company produces impeccable quality panels in a world class manufacturing unit that is operated and supervised by the finest personnel in the industry. **It has a production capacity of 25,00,000 sq.ft. monthly with 2 ACP productions lines.**

SUPER BOND can furnish composite panels upto 1550mm width. The company also prides itself in providing customization on almost all specifications of composite panels. This success is a result of diligence and expertise of the management and the production team.

With clarity in vision and resolute mission, **SUPER BOND** is set to lead the industry standards.

PVDF GOLD SERIES

- 10 year warranty*
- 2 Coat & 2 Bake KYNAR 500 PVDF coating
- Coating thickness 25 to 28 micron
- Custom Colors
- Corrosion resistance
- Durable and Beautiful
- Unbreakable
- Machinable
- Environment friendly
- 100% maintenance free & water proof
- Excellent sound & thermal insulation
- Easy to install
- Resistant to abrasion
- Convex & Concave bending properties
- Stain resistant
- Washable
- Uniform colour



THE INDUSTRY STORY

The top and the bottom layers of ACP are of coated aluminium coils and the core sandwiched between them is polyethylene.

- Protection Film with Company logo
 - Primer Coating (used in case of PVDF Only)
 - Adhesive Film
 - Adhesive Film
 - Service Coating (Anti-corrosive)
- PVDF/Polyester Resin Based Coating
 - Chromate Treated Aluminium Coil
 - Polyethylene Core (LDPE)
 - Aluminium Coil

STANDARD PANEL DIMENSIONS

Thickness: 3mm,4mm,5mm and 6mm as per requirement.
Special thickness & length available on request.
Std size: 1220mm x 2440mm, 1220mm x 3050mm, 1220mm x 3660mm
Other width: 1550mm & 915mm (as per requirement)

Product tolerance	Width	Length	Thickness		Squareness	Bow
			Coil	Panel		
	+ 2.0 mm	+ 4.0 mm	+0.03mm	+0.2 mm	Maximum 5.0 mm	Maximum 0.5 % of width and / or length

PRODUCT CHART

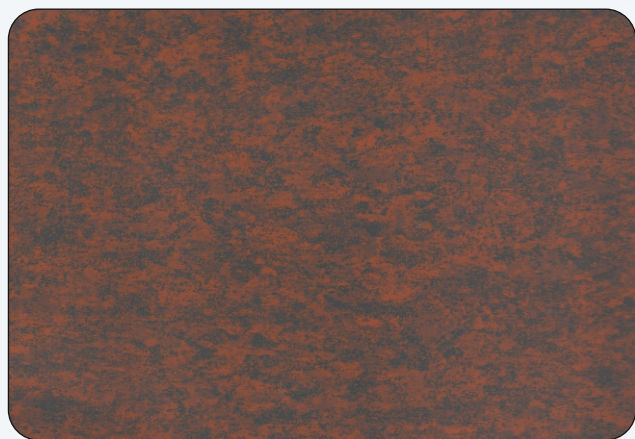
Grades	Panel Thickness	Top Coil	LDPE Core Thickness	Bottom Coil	Top Coil Coating Thickness	Bottom Coil Coating Thickness	Use/ Warranty
SB Gold 1	4.00 mm	0.50 mm	3.00 mm	0.50 mm	26μ + 2	12 μ + 2	Exterior/10 years
SB Gold 2	4.00 mm	0.25 mm	3.50 mm	0.25 mm	26μ + 2	12 μ + 2	Exterior/10 years
SB Gold 3	3.00 mm	0.25 mm	2.50 mm	0.25 mm	26μ + 2	12 μ + 2	Exterior/10 years
Excel	3.00 mm	0.15 mm	2.70 mm	0.15 mm	16μ + 2	10 μ + 2	Interior/03 years
SB Fire Guard	4.00 mm	0.50 mm	3.00 mm Mineral Core	0.50 mm	26μ + 2	12 μ + 2	Exterior/10 years

ALUMINIUM COIL USED ARE OF ALLOY 3003 - H16 AND 1100 ALLOY H16

To avoid possible color differences, all the panels must be installed in the same direction as indicated by the arrows on the protective film. Different batches of products may have a color difference, so we recommend that you place a one-time order for each project to ensure that the color is same.

Note: Custom Colors & Grades Can be Produced

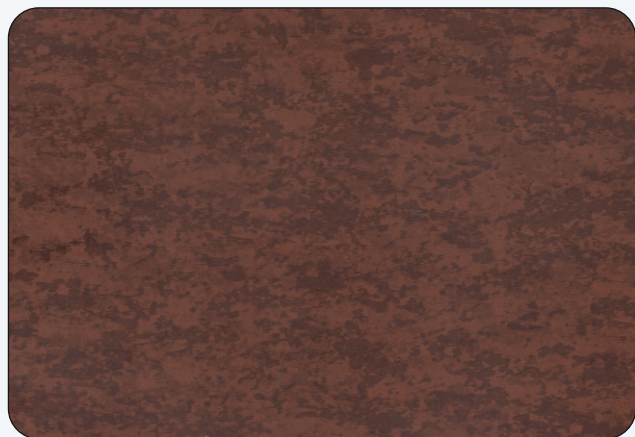
CORROSIVE METAL TEXTURE *SERIES*



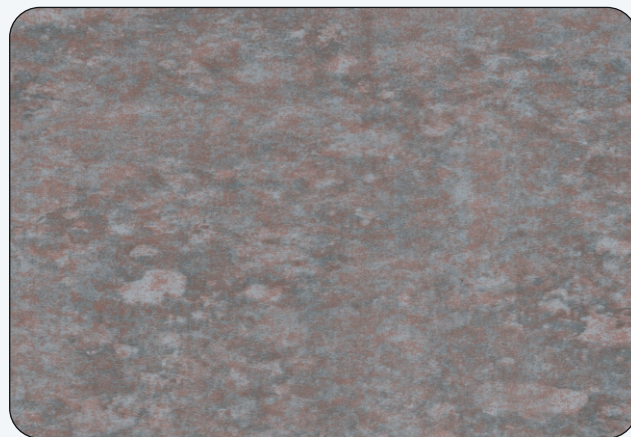
CMT6001 | METAFRAZO TEXTURE



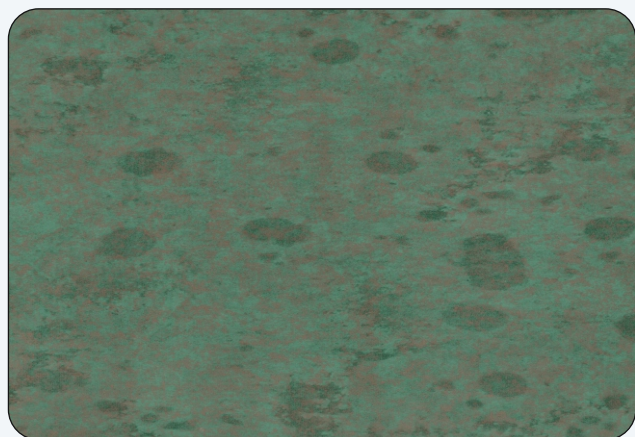
CMT6002 | CORTERN BROWN



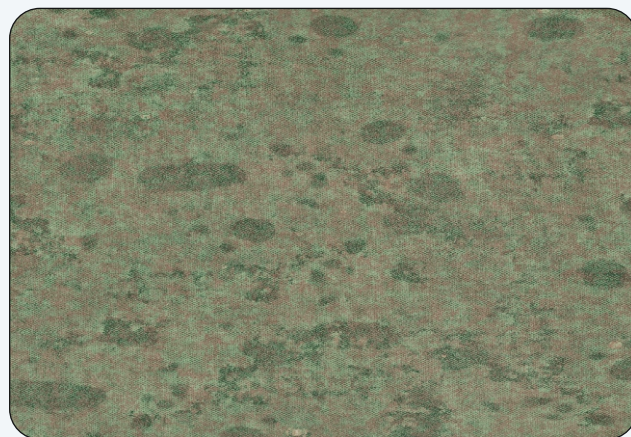
CMT6003 | ABSTRACT METAL



CMT6004 | LUSTROUS GRAY



CMT6005 | VERDIGRIS METAL



CMT6006 | MOISSURE GREEN

STONE PATTERN *SERIES*



■ ■ STC9050 | TWILIGHT BLACK



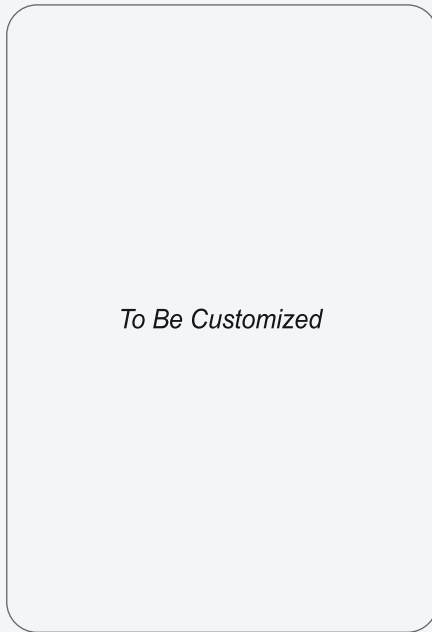
■ ■ STC9067 | FERRARI RED



■ ■ STC9081 | CHARMINAR RED



■ ■ STC9092 | RUSSIAN STONE



■ ■ STC9046 |



■ ■ STC9074 |

SAND & SKIN *SERIES*

Inspired by nature's pristine beauty

The Sand Series ACP of Super Bond has a natural look and texture without the use of any natural material. Let's add a feel of virgin nature in the world of architecture.

- Suitable for both exteriors and interiors
- Wide range of enchanting shades



SD5001 | GREY SAND STONE



SD5002 | WHICH BEACH SAND



SD5003 | ZURICH BEIGE SAND



SK 4001 | GREY SKIN FEELING



SK 4002 | JAISALMER SUNDAY SKIN



To Be Customized

TIMBER TEXTURE SERIES



SB005 | NATURAL TEAK TX



SB006 | SMOKE OAK TX



SB007 | RED OAK TX



SB008 | BURMESE TEAK TX



SB621 | AFRICAN EBONY



SB625 | MAHOGANY PREMIUM

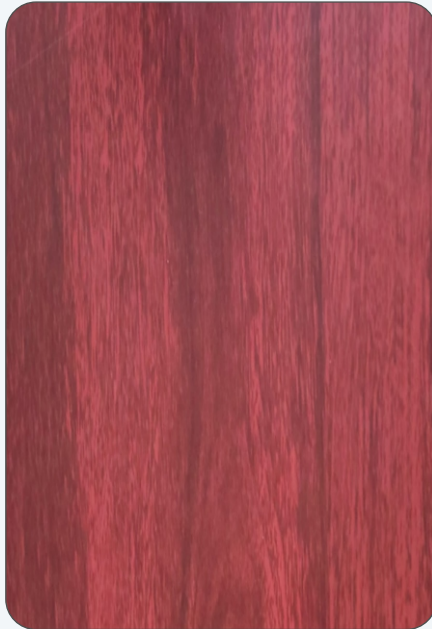
TIMBER *SERIES*

Superior wood-like interiors and exteriors are now possible with Super Bond Timber Series. Take your pick from a range of realistic looks and give your designs that extra edge.

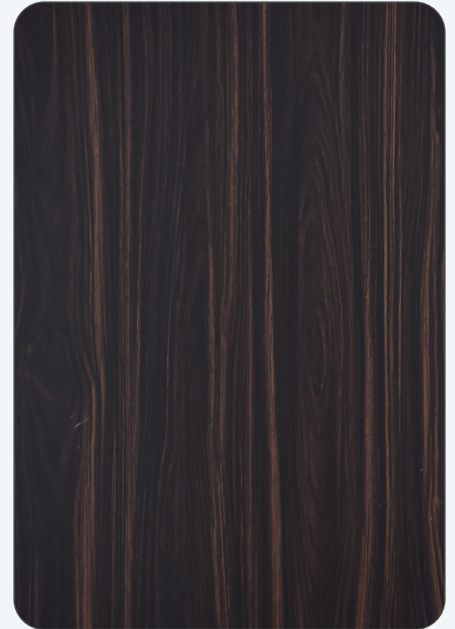
These ACPs are super flexible and can bend, fold and turn easily. Straight and angular routing assists in bending the panels to cover angles, clad columns, create linear 'caps' or trays. Beside press brake or pyramid rollers can be used to bend the composite panel into a more desired shape.



   **SB901 | BROWN OAK**



   **SB902 | ROSE WOOD**



   **SB905 | BRAZILIAN HULK**



   **SB906 | SAPHELI**



   **SB910 | AMERICAN WALNUT**



   **SB912 | NATURAL WALNUT**

 0.25 MM  6 MM HPL  0.50 MM (Make to order)



TIMBER SERIES



   **SB913 | CREME WALNUT**



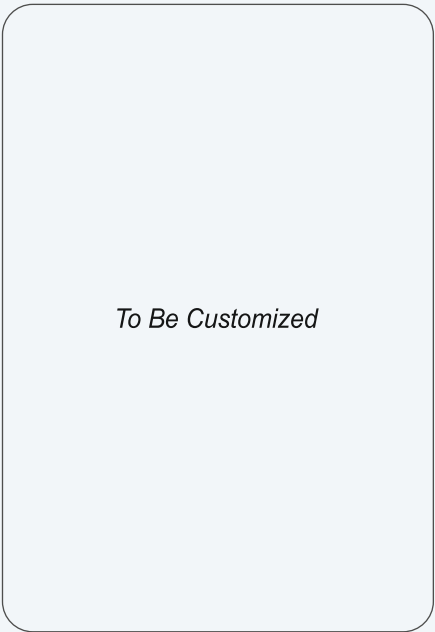
   **SB915 | CANADIAN WALNUT**



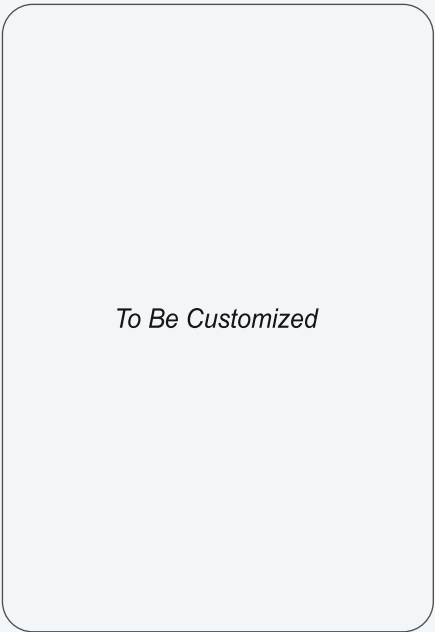
   **SB920 | TIMBER WOOD BURMA**



   **SB923 |**



   **SB926 |**



   **SB927 |**

MARBLE SERIES

MARVEL AT MARBLE

Imagine a warm matte texture that oozes sophistication,
The perfect match for your creation.

With low light reflectivity, the surface is completely opaque and smooth to touch.
The subtle tactile effect accentuates facades greatly.

The dry matte appearance hides dirt and is delightfully easy to Maintain.
Try these attractive, gloss-free finishes to experience the new.



SB801 | TRAVERTINE CREAM



SB804 | EMPERADOR DARK



SB821 | BROWN FIRE



SB825 | WILLIAMS GREY

To Be Customized

To Be Customized

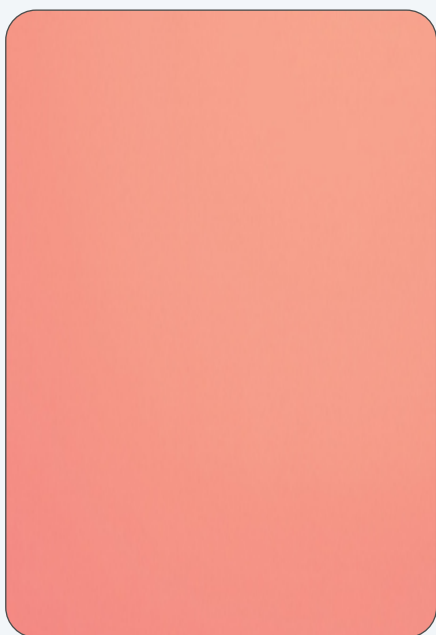
MIRROR *SERIES*

SHINE & STYLE

Super Bond Mirror Series is like no other. It can jazz up interiors and offer wonderful reflections that outshine conventional mirrors. Furthermore it comes with tints that complement your interiors.

Go ahead customise!

#ExcellenceInsideOut



■ ■ ■ **SB351** | ROSE GOLD MIRROR



■ ■ ■ **SB851** | GOLD MIRROR



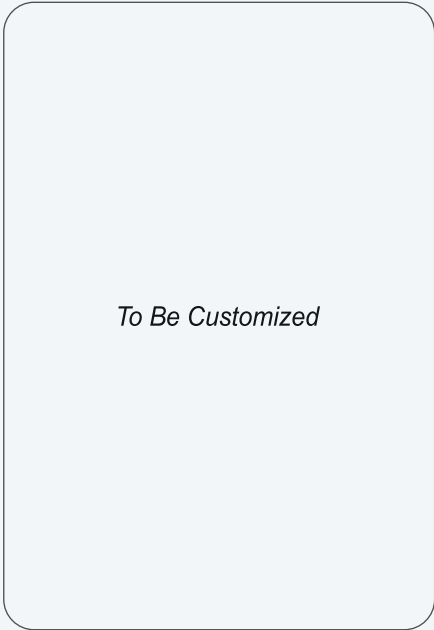
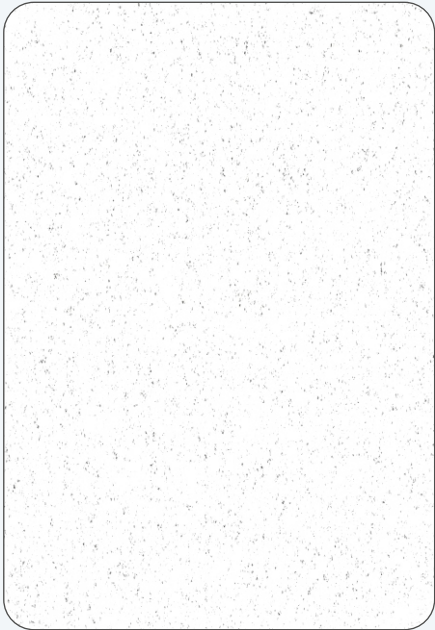
■ ■ ■ **SB751** | SILVER MIRROR



■ ■ ■ **SB551** | STAINLESS STEEL



SPARKLE *SERIES*



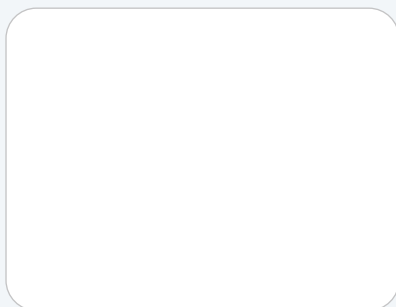
To Be Customized

 **SB951 | WHITE SPARKLING**  **SB981 | CHOCOLATE SPARKLING**

GLOSSY SERIES



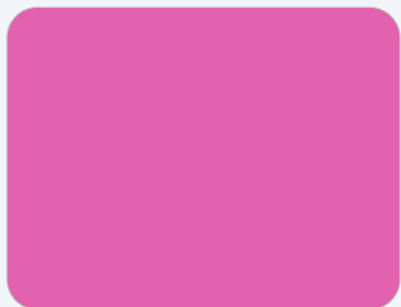
SB360 | RED GLOSSY



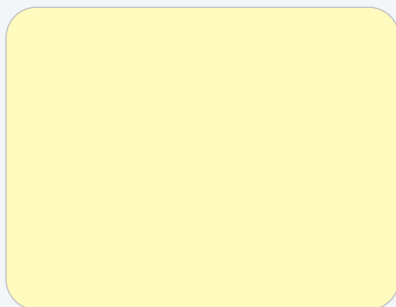
SB350 | WHITE GLOSSY



SB330 | BLACK GLOSSY



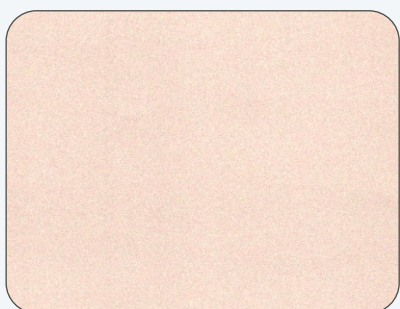
SB504 | PINK GLOSSY



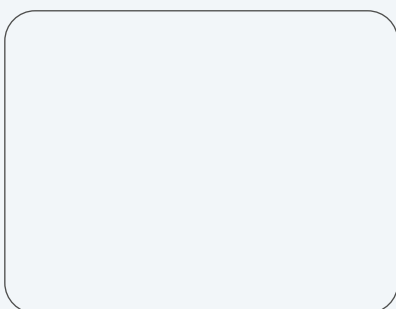
SB390 | IVORY GLOSSY



SB450 | LIME GREEN GLOSSY



SB294 | MAGIC GOLD GLOSSY



SB298 | SILVER GLOSSY



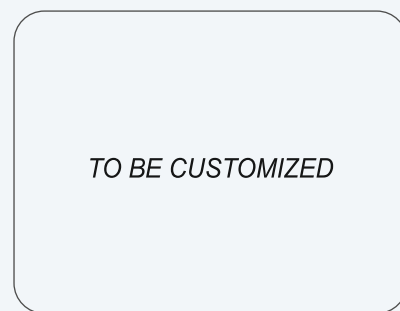
SB1010 | TWINKLING STAR



SB340 | ORANGE GLOSSY



TO BE CUSTOMIZED

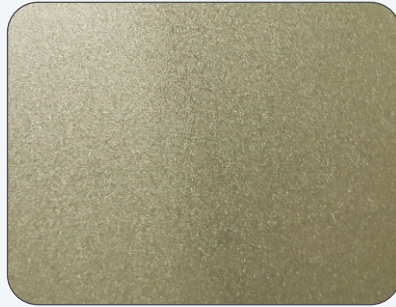


TO BE CUSTOMIZED

METALLIC *SERIES*



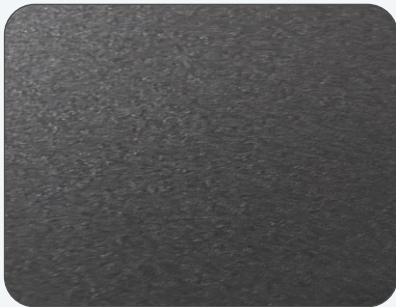
SB122 | CHAMPAGNE SILVER



SB123 | CHAMPAGNE GOLD



SB016 | CHOCO METALLIC



SB010 | DARK GREY METALLIC



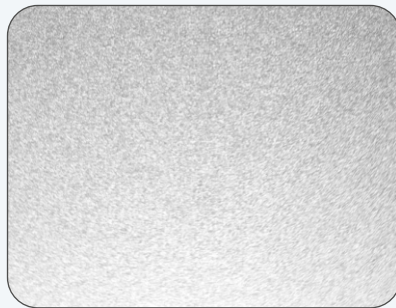
SB451 | BLACK SILVER



SB273 | METALLIC BRONZE



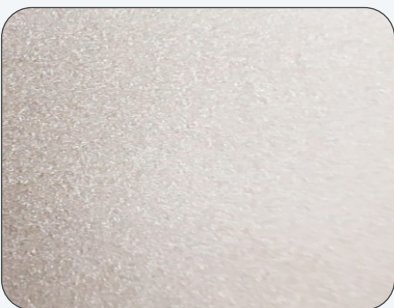
SB132 | SILVER GREY



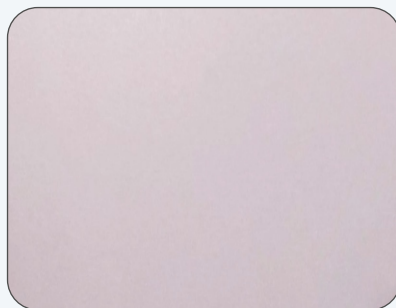
SB133 | FLASH SILVER



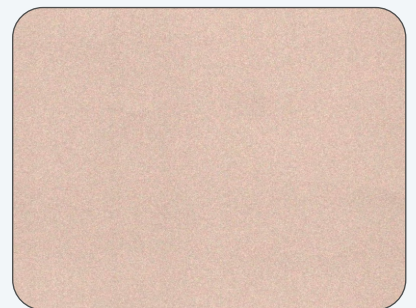
SB411 | SILVER BRUSH



SB253 | LIGHT BRONZE



SB283 | ROSE METALLIC

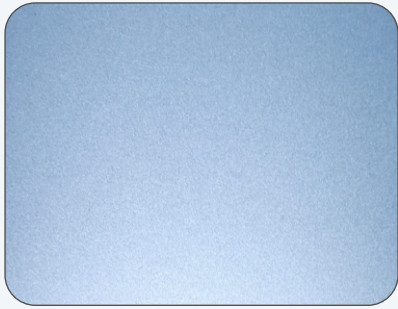


SB263 | METALLIC GOLD

METALLIC *SERIES*



 **SB233 | CRYSTAL GOLD**



 **SB251 | METALLIC BLUE**



 **SB213 | PALM COPPER**



 **SB326 | PHOENIX COPPER**



TO BE CUSTOMIZED



TO BE CUSTOMIZED



TO BE CUSTOMIZED



TO BE CUSTOMIZED



TO BE CUSTOMIZED



TO BE CUSTOMIZED

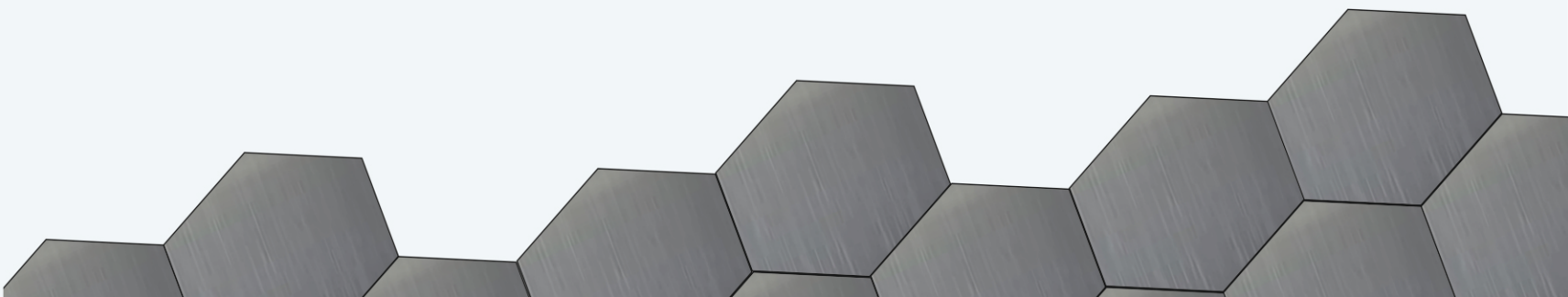


TO BE CUSTOMIZED

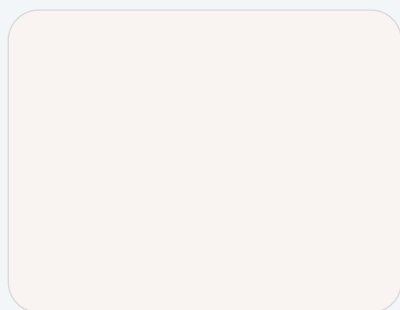


TO BE CUSTOMIZED

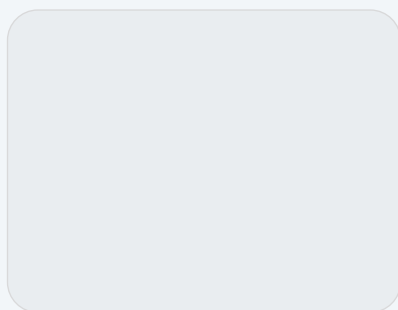
 0.15 MM  0.20 MM  0.25 MM  0.50 MM  6 MM HPL



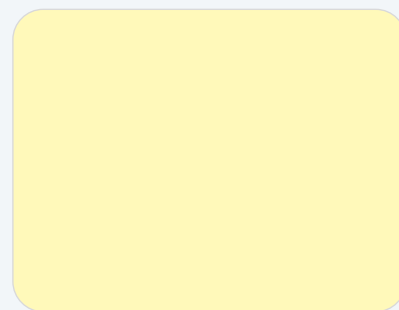
SOLID *SERIES*



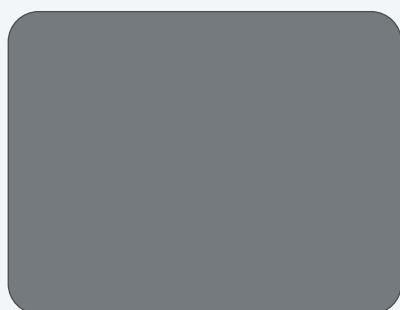
SB503 | MILKY WHITE



SB131 | BRIGHT WHITE



SB113 | OFF WHITE



SB215 | SLATE GREY



SB243 | INDIAN RED



SB331 | GARNET ORANGE



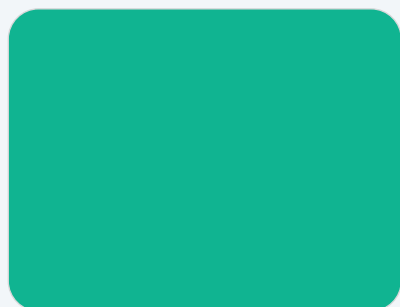
SB232 | TRAFFIC YELLOW



SB231 | LEMON YELLOW



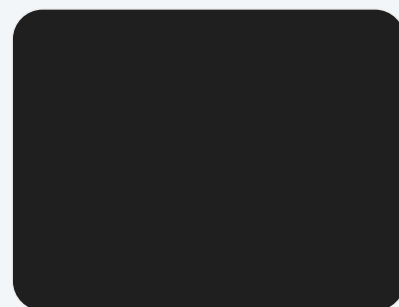
SB323 | EMERALD GREEN



SB420 | GRASS GREEN

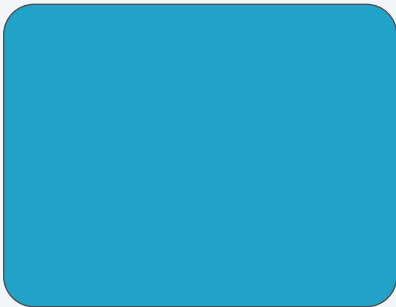


SB600 | CHOCO BROWN

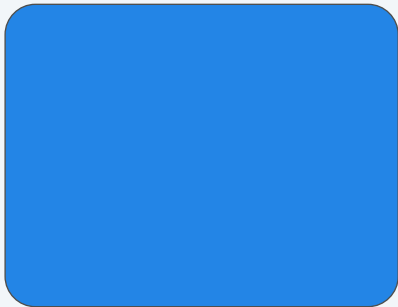


SB212 | JET BLACK

SOLID *SERIES*



     **SB261 | TWILIGHT BLUE**





     **SB353 | SIGNAL BLUE**



  **SB313 | LAKE BLUE**



     **SB333 | NAVY BLUE**



  **SB291 | PEACOCK BLUE SOLID**



     **SB373 | BURGUNDY**



To Be Customized

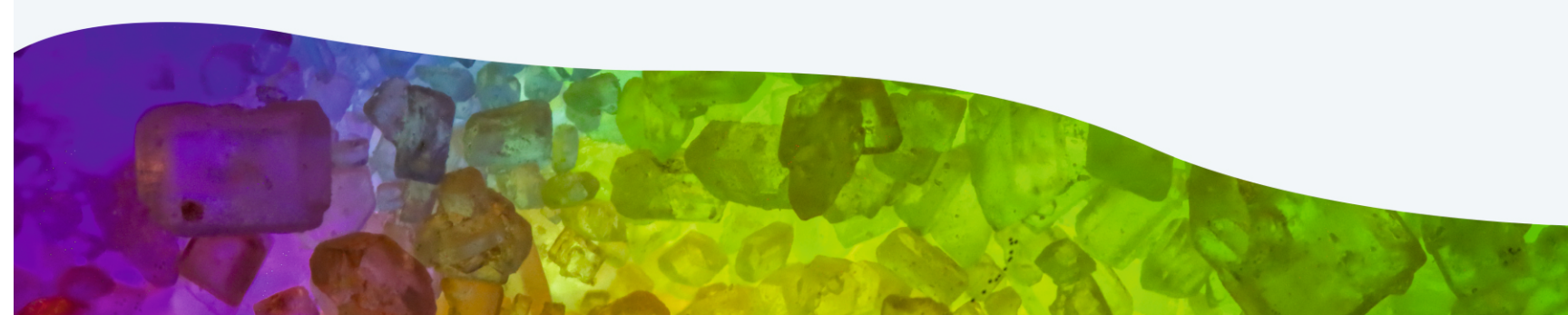


To Be Customized



To Be Customized

 0.15 MM  0.20 MM  0.25 MM  0.50 MM  6 MM HPL

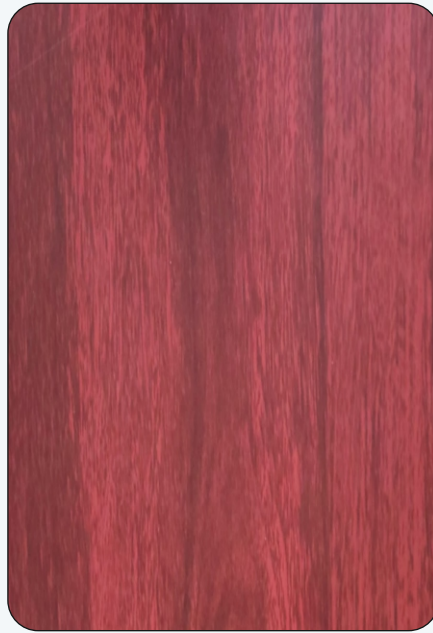


PARTITION *PANEL*

WOOD APP



SB005 | NATURAL TEAK



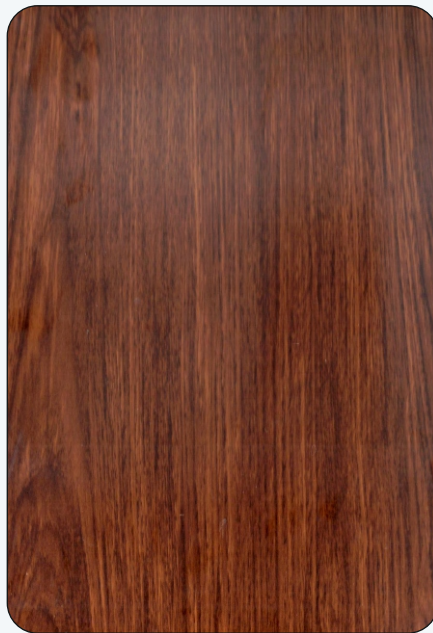
SB902 | ROSE WOOD



SB915 | ELEGANT TEAK



SB930 | MALABAR TEAK



SB940 | DARK WALNUT



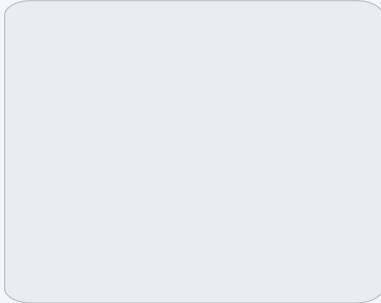
To Be Customized

- 100% Water proof & maintenance free
- Washable
- Excellent sound and thermal insulations
- Environment Friendly
- Light Weight & Rigid

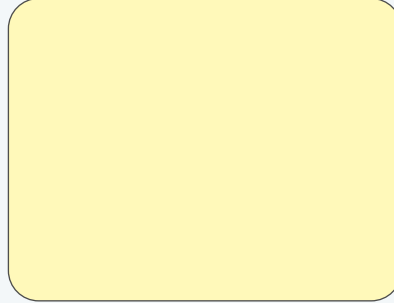
- BFT Guard (Borer, Fungus and Termite Proof)
- Stain resistant
- Reduces labour cost as no polishing required
- Excellent Flatness
- Customised Colors

PARTITION *PANEL*

SOLID & METALLIC



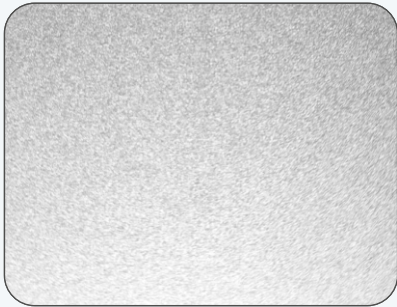
SB131 | BRIGHT WHITE



SB113 | IVORY



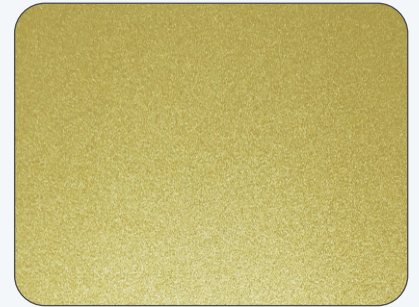
SB600 | CHOCO BROWN



SB133 | FLASH SILVER



SB451 | BLACK SILVER



SB233 | CRYSTAL GOLD



SB243 | INDIAN RED



SB333 | NAVY BLUE



TO BE CUSTOMIZED

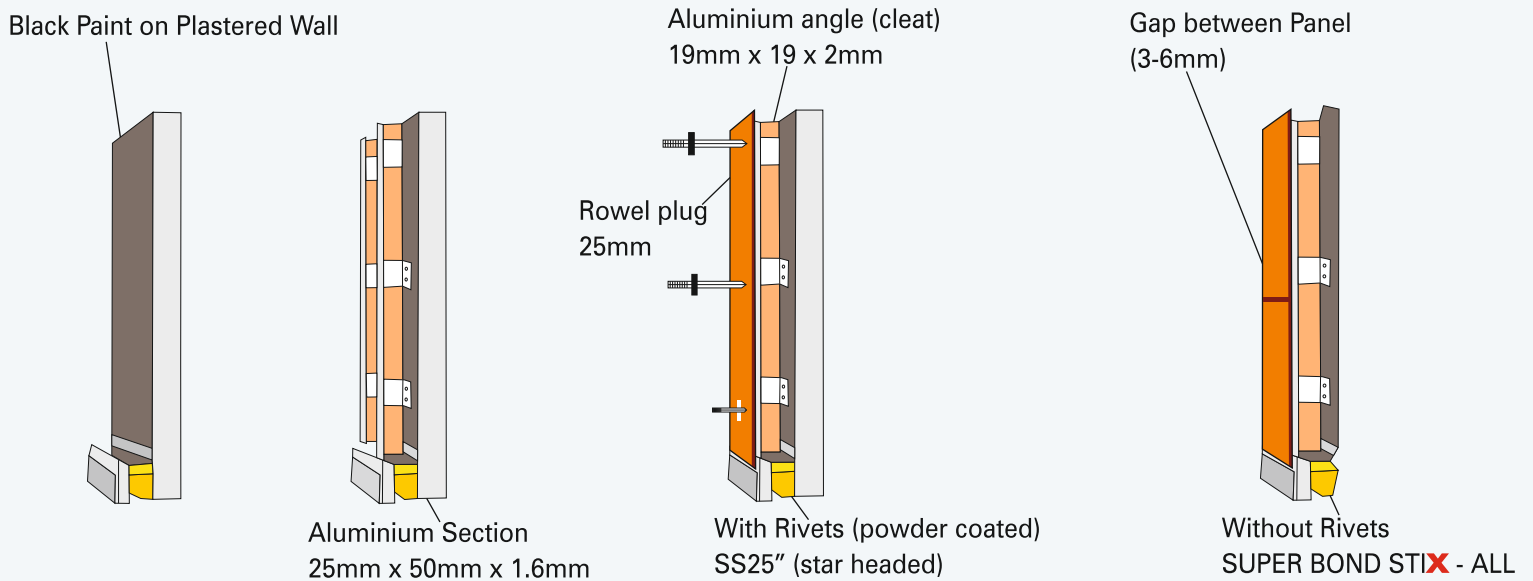
Width Options: 915mm & 1220mm

Thickness Options: 3mm, 4mm or custom upto 6mm

HPL SERIES

It is here that SUPER BOND brought forward AHPL, which is an Aluminium based High Pressure Laminate (HPL). It is more durable and elegant in looks as compared to wood. It is also highly weather resistant. AHPL has overcome the shortcomings of wood as it is manufactured using aluminium coil with double layered Lumiflon coating that is resistant to dust. It has a polyethylene core that makes it resistant to water, fungus and termite.

To top it all Super Bond HPL comes in a variety of colors, texture and sizes. SUPER BOND also offers customized colors and sizes. AHPL has redefined the concept of high-end facade and exterior. SUPER BOND offers professionals service as it has a robust marketing network in India and abroad. Whether it is Villas, Housing Societies, Corporate Buildings or Resorts, AHPL is a perfect foil in place of wood.



Fixing Detail (with Rivets)

- Black Paint on Plastered Wall
 - Fix aluminium section on wall, maintain gap of 400 - 700mm center with help of cleat vertically
 - Pilot hole must be pre-drilled before fastening rivet tight.
 - Size of rivets must be three times the thickness of panel and gouge of aluminium.
- Ensure rivets used are fully threaded.

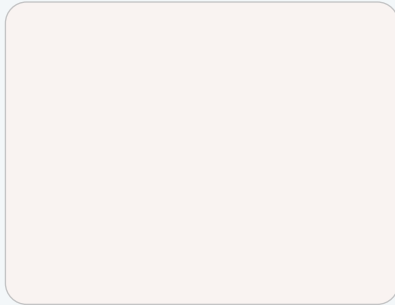
Note : Majorly all ACP Series can be made as HPL

SUPERBOND FIREGUARD FR

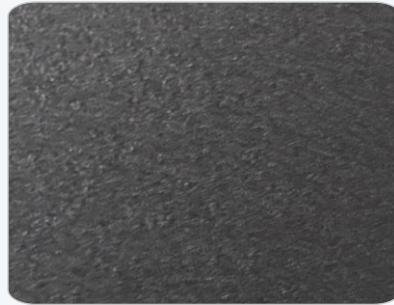
A real 2-hour escape window

A typical ACP-cladded facade in India has a frame structure comprising a non-load-bearing brick wall, followed by plaster, steel frame and an ACP envelope should contain fire and retain its structural integrity up to 2 hours.

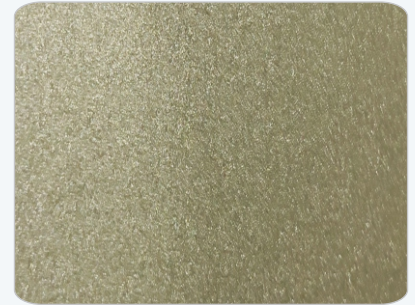
But that's not the only feature that contributes to fire protection. An authentic rating for resistance to fire also takes into account that smoke kills faster than fire, among other vital factors. This is where Super Bond's FR ACP stands above the rest.



**SB503 | MILKY WHITE
FR GRADE**



**SB010 | DARK GREY METALLIC
FR GRADE**



**SB123 | CHAMPAGNE GOLD
FR GRADE**

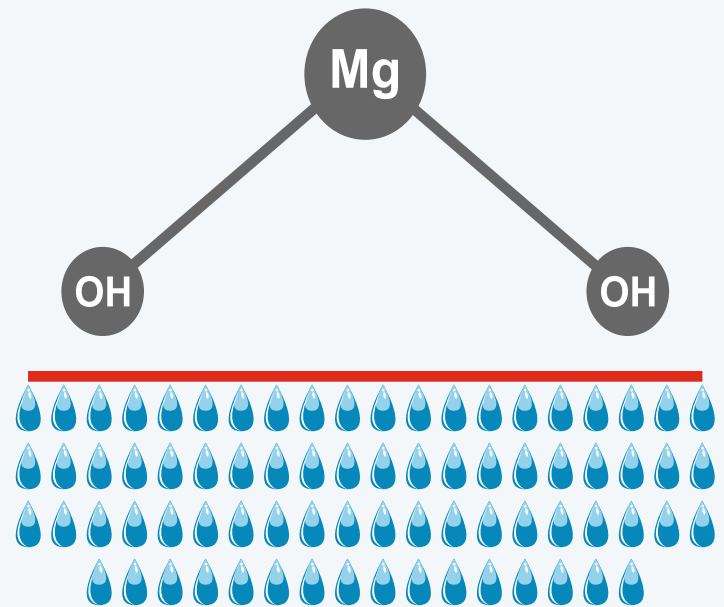
The core secret

FR Core is a non halogenated FR material that produce water vapor when it heats up. It does not produce toxic gases like the halogenated materials.

Magnesium hydroxide (MDH) is the non-halogenated material that is mixed with PE to form the core of Super Bond's FR products. MDH has a better fire- resistance performance than aluminium trihydrate (ATH), the other non-halogenated material, owing to higher decomposition temperature

Futhermore MDH is more environment-friendly than other similar materials.

MDH delays the PE transformation from solid to plastic (the point of ignition up to 360°C, by releasing water molecules and bringing down the temperature continuously.



Basic chemical reaction of the FR core

Core Details	Polyethylene	Magnesium hydroxide (MDH)	Aluminium trihydrate (ATH)
Chemical reaction	$\text{CH}_2 + \text{O}_2 = \text{CO}_2 + \text{H}_2\text{O}$	$\text{Mg}(\text{OH})_2 = \text{MgO} + \text{H}_2\text{O}$	$2\text{Al}(\text{OH})_3 = \text{Al}_2\text{O}_3 + 3\text{H}_2\text{O}$
Decomposition temperature	90°C to 110°C	310°C to 360°C	190°C to 240°C
Status	Heat generation	Heat absorption	Heat absorption

TEST CERTIFICATES



3. Test reports & test results in support of classification

3.1 Test reports

Name of Laboratory	Name of sponsor	Test reports/extended application report Nos.	Test method / extended application rules & date
Warringtonfire	Keybond Industries LLP	WF 437073 (Issue 2)	EN ISO 11925-2: 2020
Warringtonfire	Keybond Industries LLP	WF 437072 (Issue 2)	EN 13823: 2020

3.2 Test results

Test method & test number	Parameter	No. tests	Results	
			Continuous parameter - mean (m)	Compliance parameters
EN ISO 11925-2 (30s exposure - surface)	F ₁	6	-	Compliant Nil mm
	Flaming droplets/ particles		-	Compliant
EN ISO 11925-2 (30s exposure - edge)	F ₁	6	-	Compliant Nil mm
	Flaming droplets/ particles		-	Compliant
EN 13823	FIGRA 0.25s	3	0.00 W/s	-
	FIGRA 0.45s		0.00 W/s	-
	THR 600s		0.30 MJ	-
	LFS		-	Compliant
	SMOGR		0.00 m ² /s ²	-
	TSP _{600s}		15.95 m ²	-
	Fall of Flaming Droplet/Particle?		-	Compliant
	Flaming of Fallen Particle Exceeding 10s?		-	Compliant

SUPERBOND ACPs can come in SUPERBOND fireguard. Fire-Retardant grade. It has Factory Production Control certification from EXOVA Warringtonfire of the UK (ewcl5) for reaction to fire classifications of EN 13501-1 Class B- s1 and passes resistance to fire for a duration of time in accordance with ASTM E119-12. SUPERBOND fireguard (Fire-Retardant grade) is available for a complete range of ACPs.



Surface Engineering & Coating Consultant

A Reliable Paint Testing & Certification Laboratory

Test Report

Date: 03/02/2020

M/s. Keybond Industries LLP
17, super house, Amar Industrial Estate
CST Road Kalina santacruz (east)
Mumbai - 400098 India.

Ref. No. Mail dated: 23/01/2020
Sample Received: 24/01/2020
Testing Date: 25/01/2020
URL: TC8480/190000000039P

Project No: SECC-120/A/2020

Dear Sir,

Sample Detail: Color code- SB 243
Color name- Indian Red
Panel thickness- 3mm (0.25)
Grade- PVDF

Subject: - Laboratory Test of the SB-243 Indian Red ACP.

Brand Name: - SUPERBOND.

Sr. No.	Test Method	Conditions	Results
Physical properties of ACP			
A			
1	Panel thickness Measured	Temperature 23±2°C Relative Humidity 50±5%	3.11mm
2	Tensile strength ASTM D 638	Temperature 23±2°C Relative Humidity 50±5%	29.5 N/mm ²
3	0.2% Proof Stress ASTM D 638	Temperature 23±2°C Relative Humidity 50±5%	26.2 N/mm ²
4	% Elongation ASTM D 638	Temperature 23±2°C Relative Humidity 50±5%	4.1 %
5	Peel test ASTM D 903	Temperature 23±2°C Relative Humidity 50±5%	2.4 N/mm
6	Flexural Strength *ASTM D790	Temperature 23±2°C Relative Humidity 50±5%	86.39 N/mm ²
7	Flexural Modulus *ASTM D790	Temperature 23±2°C Relative Humidity 50±5%	5173.05 N/mm ²
8	Shear strength (Punch shear test) ASTM D 732	Temperature 23±2°C Relative Humidity 50±5%	13.3 N/mm ²

Project No: SECC-120/A/2020, Rev0, URL: TC8480/190000000039P, 'Laboratory Test of the SB-243 Indian Red ACP. (Brand Name: - SUPERBOND)'

Surface Engineering & Coating Consultant

A Reliable Paint Testing & Certification Laboratory

Test Report

Date: 03/02/2020

M/s. Keybond Industries LLP
17, super house, Amar Industrial Estate
CST Road Kalina santacruz (east)
Mumbai - 400098 India.

Ref. No. Mail dated: 23/01/2020
Sample Received: 24/01/2020
Testing Date: 25/01/2020
URL: TC8480/190000000039P

Project No: SECC-120/C/2020

Dear Sir,

Sample Detail: Color code- SB 451
Color name- Black Silver
Panel thickness- 4mm (0.25)
Grade- PVDF

Subject: - Laboratory Test of the SB-451 Black Silver ACP.

Brand Name: - SUPERBOND.

Sr. No.	Test Method	Conditions	Results
A	Physical properties of ACP		
1	Panel thickness Measured	Temperature 23±2°C Relative Humidity 50±5%	4.06mm
2	Tensile strength ASTM D 638	Temperature 23±2°C Relative Humidity 50±5%	37.9 N/mm ²
3	0.2% Proof Stress ASTM D 638	Temperature 23±2°C Relative Humidity 50±5%	32.2 N/mm ²
4	% Elongation ASTM D 638	Temperature 23±2°C Relative Humidity 50±5%	7.0%
5	Peel test ASTM D 903	Temperature 23±2°C Relative Humidity 50±5%	2.0N/mm
6	Flexural Strength *ASTM D790	Temperature 23±2°C Relative Humidity 50±5%	57.54 N/mm ²
7	Flexural Modulus *ASTM D790	Temperature 23±2°C Relative Humidity 50±5%	6862.55 N/mm ²
8	Shear strength with Punch shear test ASTM D 732	Temperature 23±2°C Relative Humidity 50±5%	18.2 N/mm ²

Project No: SECC-120/C/2020, Rev.0, URL: TC8480/190000000039P, Laboratory Test of the SB-451 Black Silver ACP, Brand Name SUPERBOND.

Surface Engineering & Coating Consultant

A Reliable Paint Testing & Certification Laboratory

Test Report

Date: 03/02/2020

M/s. Keybond Industries LLP
17, super house, Amar Industrial Estate
CST Road Kalina santacruz (east)
Mumbai - 400098 India.

Ref. No. Mail dated: 23/01/2020
Sample Received: 24/01/2020
Testing Date: 25/01/2020
URL: TC8480/190000000039P

Project No: SECC-120/B/2020

Dear Sir,

Sample Detail: Color code- SB 123
Color name- Champagne gold
Panel thickness- 4mm (0.5)
Grade- PVDF

Subject: - Laboratory Test of the SB-123 Champagne gold ACP.

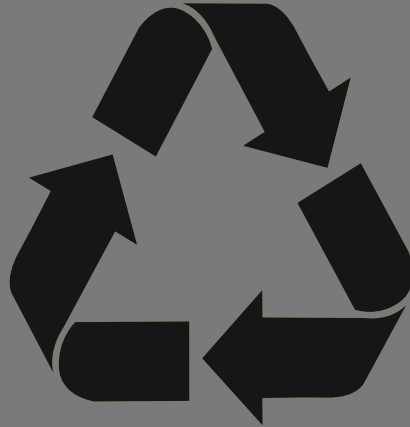
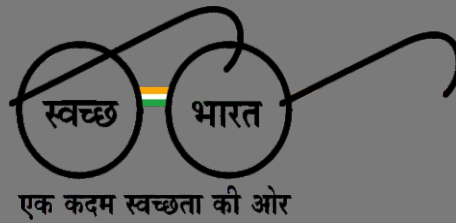
Brand Name: - SUPERBOND.

Sr. No.	Test Method	Conditions	Results
Physical properties of ACP			
1	Panel thickness Measured	Temperature 23±2°C Relative Humidity 50±5%	4.01mm
2	Tensile strength ASTM D 638	Temperature 23±2°C Relative Humidity 50±5%	46.8 N/mm ²
3	0.2% Proof Stress ASTM D 638	Temperature 23±2°C Relative Humidity 50±5%	40.2 N/mm ²
4	% Elongation ASTM D 638	Temperature 23±2°C Relative Humidity 50±5%	6.7 %
5	Peel test ASTM D 903	Temperature 23±2°C Relative Humidity 50±5%	7.03N/mm
6	Flexural Strength *ASTM D790	Temperature 23±2°C Relative Humidity 50±5%	118.66 N/mm ²
7	Flexural Modulus *ASTM D790	Temperature 23±2°C Relative Humidity 50±5%	10984 N/mm ²
8	Shear strength with Punch shear test ASTM D 732	Temperature 23±2°C Relative Humidity 50±5%	17.8 N/mm ²

Project No: SECC-120/B/2020, Revd. URL: TC8480/190000000039P, Laboratory Test of the SB-123

CLIENTELE





REDUCE REUSE RECYCLE



Head Office: 17, Super House, Amar Brass Industrial Estate, Kalina CST Road,
Near Raheja Centre Point, Santacruz East, Mumbai - 400 098

Factory Address: Keybond Industries LLP, Plot No. 6, 7 & 17, 18, Amgaon Industrial
Estate, Village Amgaon, Taluka Talasri, Palghar, Maharashtra - 401 606

Email: superbond@superbondindia.co.in • **Web:** www.superbondindia.co.in

Factory Email: keybondindia@gmail.com



10* Years Warranty

All Super Bond products are a landmark in durability and quality. Our stringent quality checks ensure that our products are free from any manufacturing defects. However, we recommended that you inspect the products prior to installation.

Increase of any issues with product quality, we are liable for the cost of our product only. Complete details regarding the warranty terms are available with our authorized dealers.

* Not applicable in Interior Grade.

